



"BONGO" – CAPACITY PLAN

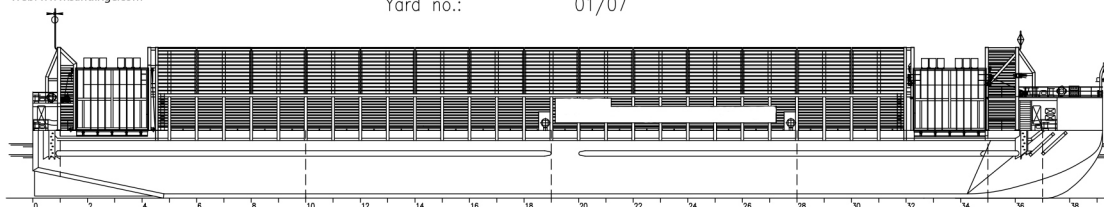
UNMANNED BARGE

Sandinge Bogsering & Sjötransporter
Tel: +46 (0)523-66 07 45
E-mail: info@sandinge.com
Web: www.sandinge.com

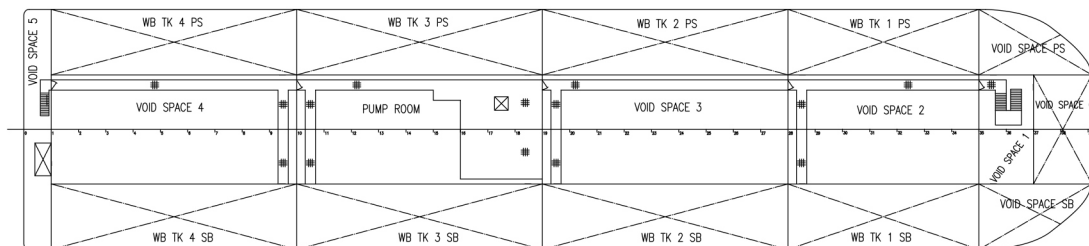
Class:
Built by:
Yard no.:

GL 100 A5 M (Restricted International Service) "PONTOON"
Navikon SRY Sp. z o.o. 2008
01/07

CAPACITY OF WATER BALLAST TANKS		DENSITY – 1.025 t/m ³					
IT.	TANK NAME	FR.÷FR.	VOL NET [m ³]	MASS [t]	X _{cv} (for VOL. NET) [m]	Y _{cv} (for VOL. NET) [m]	Z _{cv} (for VOL. NET) [m]
1.	WB TK 1 PS	28 ÷ 35	637.20	653.17	78.742	-7.997	3.108
2.	WB TK 1 SB	28 ÷ 35	637.20	653.17	78.742	7.997	3.108
3.	WB TK 2 PS	19 ÷ 28	820.20	840.66	58.750	-8.000	3.106
4.	WB TK 2 SB	19 ÷ 28	820.20	840.66	58.750	8.000	3.106
5.	WB TK 3 PS	10 ÷ 19	820.20	840.66	36.250	-8.000	3.106
6.	WB TK 3 SB	10 ÷ 19	820.20	840.66	36.250	8.000	3.106
7.	WB TK 4 PS	1 ÷ 10	769.10	788.35	14.269	-8.012	3.270
8.	WB TK 4 SB	1 ÷ 10	769.10	788.35	14.269	8.012	3.270
TOTAL			6093.30	6245.70	45.645	0.00	3.148



Timber Cargo Securing Manual – free timber cargo is stowed in box form of cargo space
Main deck stowage area 1893m²
Stowage height to the top of cargo walls 7.60m PS & 3.32m SB
Permissible uniformly distributed load on deck 8t/m²
Maximum deck load: 50tonnes/axle (vehicle with double pneumatic tyres each side)



MAIN DIMENSIONS

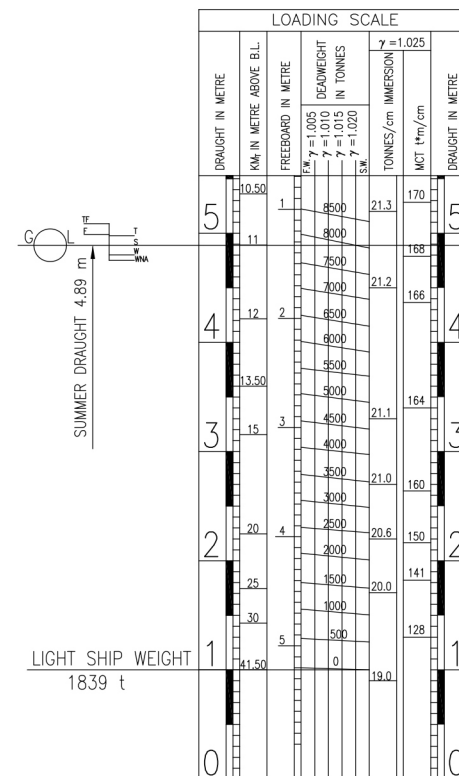
LENGTH OVERALL	LOA	98.000 m
LENGTH BETW. P.P.	LPP	97.987 m
BREADTH MOULDED	B	22.000 m
DEPTH MOULDED	D	6.200 m
DRAUGHT SUMMER	T	4.890 m

PARTICULARS						
ITEM	FRESH W/ TROPICAL	FRESH W/ SUMMER	TROPICAL	SUMMER	WINTER	WNA
FREEBOARD M	1.112	1.214	1.228	1.330	1.432	1.482
DRAUGHT EXTREME M	5.108	5.006	4.992	4.890	4.788	4.738
SPECIFIC GRAVITY	1.000		1.025			
DEADWEIGHT TONNES	8269	8057	8275	8058	7841	7735

LIGHT WEIGHT (CARGO WALLS INCLUDED)	1839 t
-------------------------------------	--------

MACHINERY

- Auxiliary engine w/generator I & II: Volvo. – Generating set: 150 kVA.
- Harbour Diesel Generator: Ruggerini. Power ca 12 kW.
- Ballast pumps I & II: Maker Iron Pump. Capacity Q=400 m/h.
- Ejector pump: Iron pump.
- Ejector Iron pump.
- Air Compressor type Airpol N50.
- Hydraulic agregate 2 pcs (aft & fore): Lidan.
- Windlass/Mooring Winch: Lidan. Mooring winch pull 85 kN, speed 15 m/min. Windlass capacity: anchor 1550 kg + 36 mm anchor cable legth 220 m, drum capacity 160 m for rope 40 mm (winch equipped with warping head).
- Mooring winch: Lidan. Pull 85 kN, speed 15 m/min, drum capacity 160 m for rope 40 mm (winch equipped with warping head).
- Three lifting ramps for vehicles. Ramps operated by two wires and rollers system & winches. Vehicles max. load 50 tonnes/axle (vehicles with double pneumatic tyres each side).
- Auxiliary davit. Pendant handling davit 2,5 tonnes capacity.
- Ventilation fans for underdeck space.



Miscellaneous

- Batteries for navigation lights and emergency lighting.
- Navigational lights/equipment. 2 side lights (red and green) and 1 stern light (white).
- Emergency towline. The barge is fitted with a permanent emergency towline laid along side.