

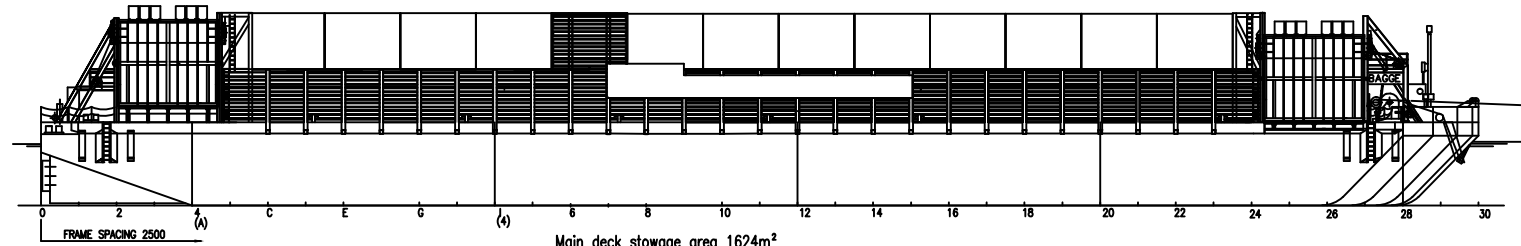
# '' BAGGE '' — CAPACITY PLAN

UNMANNED BARGE

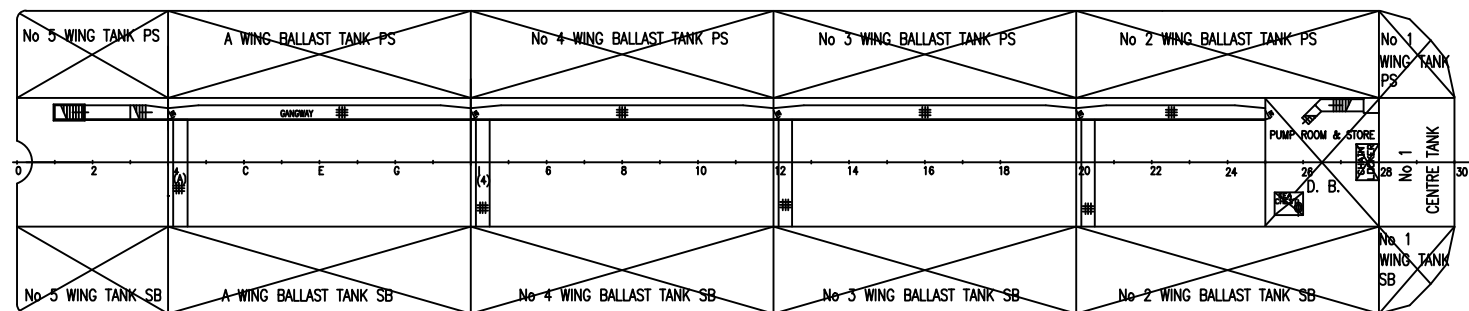


Sandinge Bogsering & Sjøtransporter  
Tel: +46 (0)523-66 07 45  
E-mail: info@sandinge.com  
Web: www.sandinge.com

Class: DnV  
Signal letters: SIBC  
Built by: Tangen Verft Kagerø, Norway, 1976  
Yard no.: 777/778  
Modified Lengthened: Westamarine a.s. Kr. sand 1995  
Modified: Navikon SRY 2002



Main deck stowage area 1624m<sup>2</sup>  
Stowage height to the top of fixed cargo walls 3.32m  
Stowage height to the top of removable cargo walls 7.13m  
Permissible uniformly distributed load on deck 10t/m<sup>2</sup>



TANKS	BETW. FRAMES	VOLUME M <sup>3</sup>	WEIGHT S.W.	VCG M	LCG M	FREE S.MOM. TM
<b>DRY TANKS</b>						
No 1 W.TANK PS	28-30	62	-	3.740	91.625	48.3
No 1 CENTRE TANK	28-30	144	-	3.480	91.925	262.3
No 1 W.TANK SB	28-30	62	-	3.740	91.625	48.3
No 5 W.TANK PS	0-4(A)	214	-	3.483	5.789	162.4
No 5 W.TANK SB	0-4(A)	214	-	3.483	5.789	162.4
DOUBLE BOTTOM	25-28	75	-	0.600	86.255	521.4
TOTAL DRY TANKS CAPACITY		771				
<b>BALLAST TANKS</b>						
No 2 W. BALLAST TANK PS	20-28	621	636	2.774	79.955	324.6
No 2 W. BALLAST TANK SB	20-28	621	636	2.774	79.955	324.6
No 3 W. BALLAST TANK PS	12-20	627	643	2.756	60.000	324.6
No 3 W. BALLAST TANK SB	12-20	626	641	2.756	60.000	324.6
No 4 W. BALLAST TANK PS	4-12	627	643	2.756	40.000	324.6
No 4 W. BALLAST TANK SB	4-12	627	643	2.756	40.000	324.6
A W. BALLAST TANK PS	A-I(4)	627	643	2.756	20.000	324.6
A W. BALLAST TANK SB	A-I(4)	627	643	2.756	20.000	324.6
TOTAL BALLAST CAPACITY		5003	5128			
FUEL OIL TANK (PS)	27-28	4.0	3.5	7.65	87.500	-

MAIN DIMENSIONS		
LENGTH OVERALL	LOA	95.000 M
LENGTH BETW. P.P.	LPP	95.000 M
BREADTH MOULDED	B	20.000 M
DEPTH MOULDED	D	5.500 M
DRAFT SUMMER F.W.	d	4.32 M
DRAFT SUMMER S.W.	d	4.22 M

PARTICULARS						
ITEM	FRESH W TROPICAL	FRESH W SUMMER	TROPICAL	SUMMER	WINTER	WNA
FREEBOARD M	1.119	1.207	1.218	1.306	1.394	1.444
DRAUGHT EXTREME M	4.408	4.320	4.309	4.221	4.133	4.083
SPECIFIC GRAVITY	1.000		1.025			
DEADWEIGHT TONNES	6262	6093	6262	6093	5924	5827

LIGHT WEIGHT (CARGO WALLS INCLUDED)	1524 MT
-------------------------------------	---------

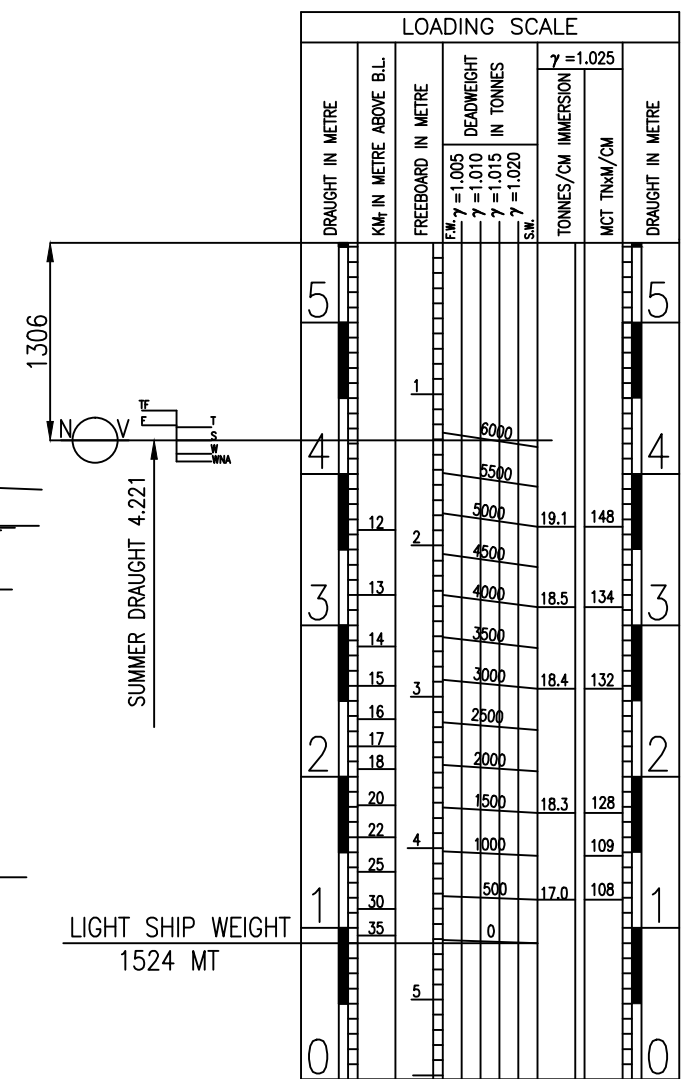
## MACHINERY

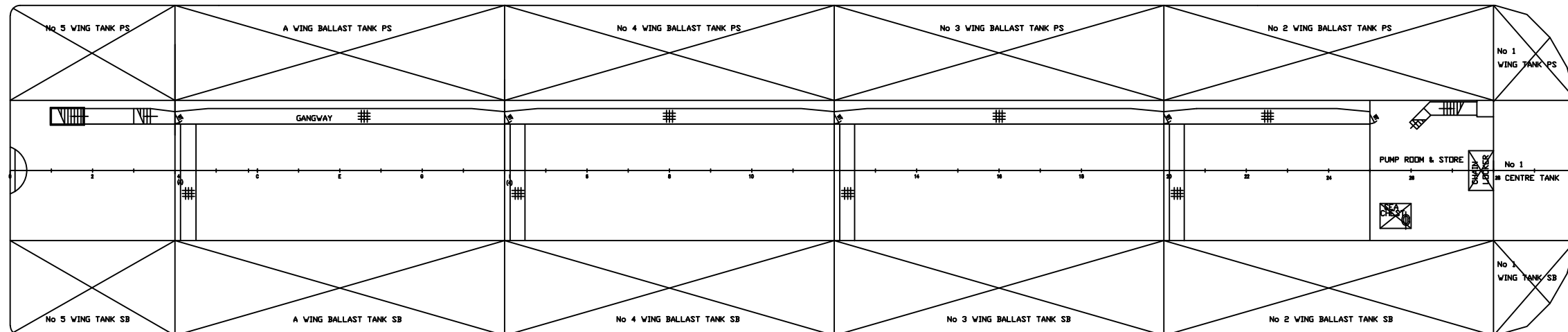
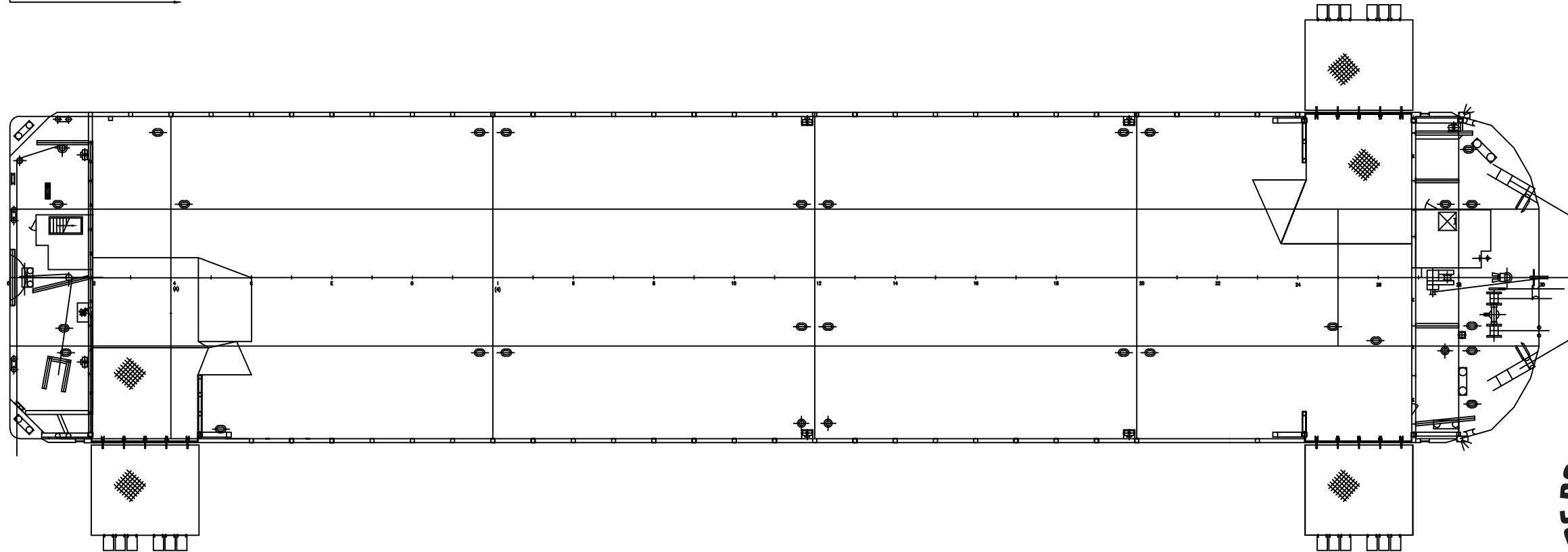
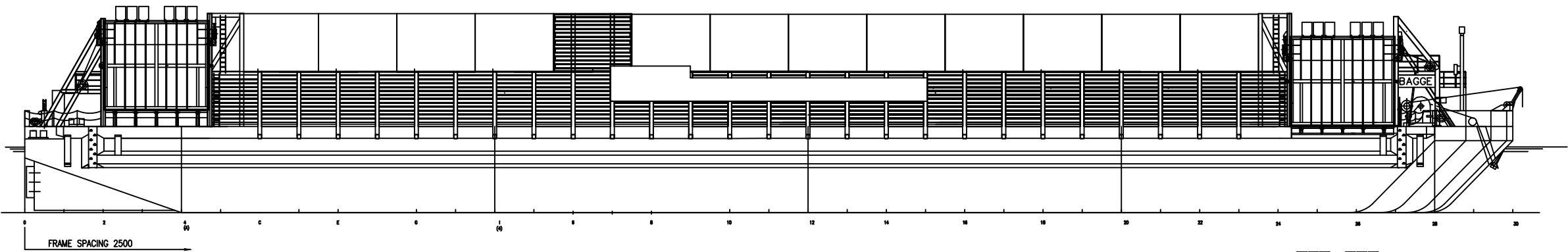
- Auxiliary engine w/generator I
  - One Deutz, type F6L 912 air cooled diesel engine
  - Maximum cont. rating 70kW (95BHK) at 2300rpm, bore 100mm, stroke 120mm.
  - Fuel consumption 221g/kWh
  - Generator: M7B200 S.A. 42kW, 50Hz 380V
- Auxiliary engine w/generator II (GREEN POWER) GP100A/J
  - one JOHN DEERE engine - model 4045HF158, MCR=100kW, 1500rpm
  - Fuel consumption 215g/kWh
  - generator synchro ~ 3 phases, 100kVA, 50 Hz, 230/400V, cosφ=0,8
- Hydraulic pump
  - One off Allweiler hydraulic pump for anchor windlass
  - Type SNH 440 capacity 640 l/min, pressure 25bar
- Anchor windlass & capstan
  - One off A/S Hydraulic Brattvaag placed forward, type 8 9 H-50
  - Capacity: 1 anchor 1940kg and 80m of ø38mm chain can run in a speed 9m/min
  - Line pull 3000kp at 0-33m/min
  - One off electric windlass 11kW placed aft
  - electric motor VEM GmbH 400V, 50Hz, 21.5/12.5rpm
  - Capacity: 1 anchor 1300kg and 150m of wire ø32mm short piece stud link cable chain 46mm.
  - Windlass can run with speed 9m/min
  - one off electric capstan placed aft (motor 11kW 960rpm)
- Air compressor
  - Compressor type E.C.B.K14-150-5.5 TP 400 50 EU RACE, 1370 rpm, 620 l/min, 5.5 BPH (4kW), pressure 10bar, tank volume 150 litres
  - compressor "Compact Air" 8bar, 7,5kW, 1290rpm

- Active ballast system
  - Wing tanks nos 2, 3, 4 and A SB & PS are used as ballast tanks during loading/unloading of deck cargo
  - two off self priming vert. w.11kW motor type IRON QVP-8/300 capacity 300m<sup>3</sup>/10m
- Three lifting ramps for vehicles
  - maximum load 65 tonnes on single axle
  - ramps operation by individual wire and rollers system driven electrical winches
  - winches TNE 4000/-max pull 55kN, capacity of drum min. 60m of steel wire ø 16mm
- Auxiliary davit
  - one off davit 2.5 tones capacity for handling of pendant- installed on bow at CL

## EQUIPMENT

- Batteries
  - one set of 600 Ah for navigation lights
  - one off starting battery for auxiliary motor
- Navigational lights/equipment
  - side and stern lights electrical type with propan system as back up
  - 2 off side lights (red and green)
  - 1 off stern light (white)
  - 2 off anchor lights (white)
  - 1 off black ball (signal)
  - 1 off black cube (signal)
  - 3 off propan gas bottles capacity 17kg each mounted on deck (for navigation lights)
- Emergency towline
  - The barge is fitted with a permanent emergency towline laid along side.





Sandinge Bogsering & Sjötransporter  
 Tel: +46 (0)523-66 07 45  
 E-mail: info@sandinge.com  
 Web: www.sandinge.com

**PRINCIPAL DIMENSIONS**

Length overall	L.O.A.=95.00m
Length between P.P.	L.P.P.=95.00m
Breadth moulded	B=20.00m
Depth moulded	D=5.50m
Draft summer F.W..	d=4.32m
Draft summer S.W.	d=4.22m
Evenly distributed deck load	10 t/m <sup>2</sup>
Lightship weight	1430 tonnes

BAGGE - UPGRADE		DATE
GENERAL ARRANGEMENT		SCALE
BIURO TECHNIKI OKRETOWEJ MR		DESIGNED BY
ul. 11-go Lipca 5, 80-009 Gdynia, Poland		CHECKED BY
Tel: 71 79 19 42 39 500		DATE
e-mail: biuro@okretowej.pl		
This document shall not be reproduced or published without the written permission.		