

PERMISSIBLE LOADS			
LOAD CASE	MAX. PERM. LOAD	DIM. PART	
ANYWHERE ON DECK	1.9 TONNES /m ²	Longitudinal	
EVEN DISTRIBUTION: TRV. WEB	5.4 TONNES /m.	Web	
EVEN DISTRIBUTION: BULKHEAD	27.1 TONNES /m.	Weid	
POINT LOAD: ON DECK	1.7 TONNES **	Plate thickness	
POINT LOAD: ANYWHERE ON WEB	8.1 TONNES **	Weid *	
POINT LOAD: ANYWHERE ON BULKHEAD	8.1 TONNES **	Weid *	
POINT LOAD: BULKHEAD/ WEB	32.5 TONNES **	Weid *	
POINT LOAD: BULKHEAD/ BULKHEAD	32.5 TONNES **	Weid *	

* = WELD:
Between deck & bulkhead: a=4 mm
Between deck & longitudinal: a=4 mm
Between deck & web: a=4 mm

** = ASSUMED PRINT: 300x300mm.

EVERY OTHER LOADCASE TO BE CONSIDERED SPECIALLY.

○ = TANK OPENING

MAIN DIMENSIONS:

LENGTH OVER ALL 29,98 m
BREADTH MOULDED 19,94 m
DEPTH MOULDED 2,50 m

“HIGH LIFT” CALL SIGN: SETI

YARD:	DATE: 2008-07-09	DATE: 2008-07-09	SCALE: 1:250
	DRAWN: CA	CHECKED: PH	

CAPACITY PLAN

TITLE:

DWG. NO.:

08254-1-152-01

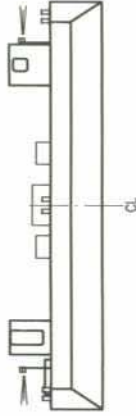
NO. OF SHEETS: 1

C

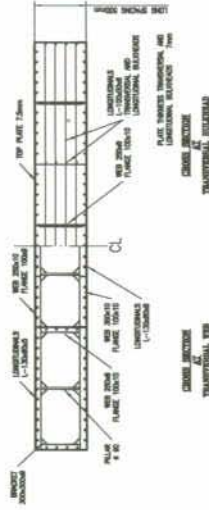


Sandinge Bogsering & Sjötransport

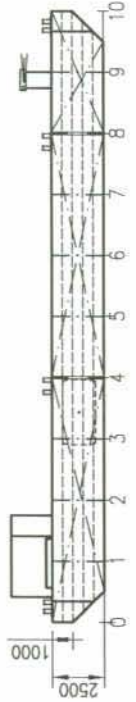
Skal Hedarna 186
SE-463 82 Lysekil
Sweden
Tel: +46 (0)523 66 07 45
Fax: +46 (0)523 66 07 22
E-mail: info@sandinge.com
Web: www.sandinge.com



FRONT VIEW



SECTION



SIDE VIEW



MAIN DECK

CAPACITIES OF WATER BALLAST TANKS

TANK No.	VOLUME m ³	LCG fr. L/2 m	VCG fr. BL m	TCG fr. CL m	MOM. OF INERT. m ⁴
1 SB WB	83.99m ³	11.81	1.31	6.98	104.9
1 C WB	112.78m ³	11.83	1.31	0	256.0
1 P WB	83.99m ³	11.81	1.31	-6.98	104.9
2 SB VOID	180.72	3.0	1.255	7.00	216.0
2 C VOID	240.96	3.00	1.255	0	512
2 P VOID	180.72	3	1.255	-7.00	215.0
3 S ENGINE ROOM	174.52	-8.803	1.279	6.991	212.4
3 P VOID	174.52	-8.803	1.279	-6.991	212.4
3 C F	120.48 m ³	-6.0	1.26	0	256.0
3 C A	112.79 m ³	-11.83	1.31	0	256.0