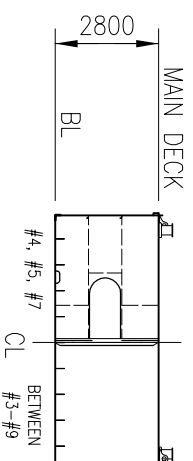


**SIDE VIEW**

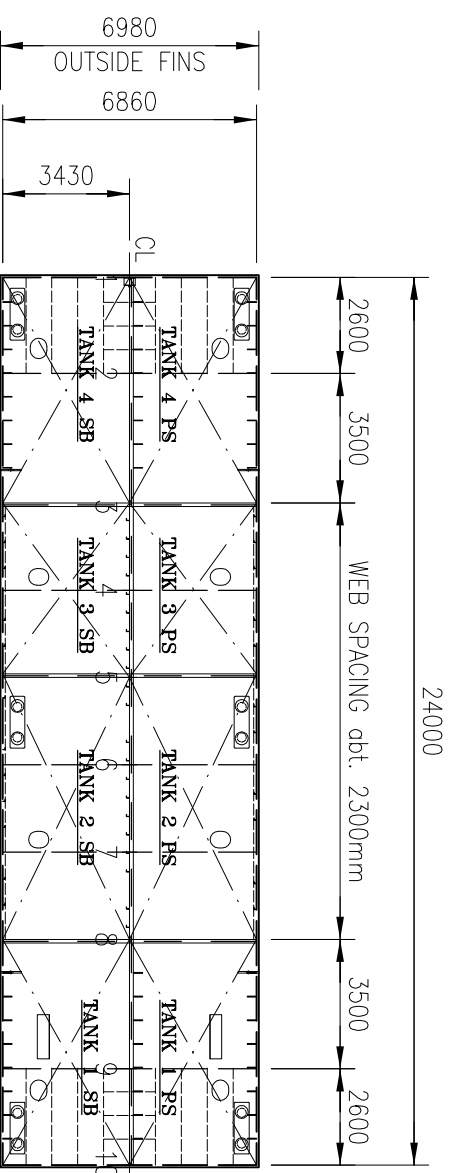


**SECTION**

PERMISSIBLE LOADS			
LOAD CASE	MAX. PERM. LOAD	DIM. PART	
ANYWHERE ON DECK #3-#8	1.4 TONNES /m2	Plate thickness	
ANYWHERE ON DECK #1-#3, #8-#10	4.0 TONNES /m2	Plate thickness	
EVEN DISTRIBUTION:	TRV. WEB	26.6 TONNES /m.	Buckling
	BHD.	26.6 TONNES /m.	Buckling
POINT LOAD: ANYWHERE ON DECK #3-#8	6.0 TONNES **	Plate thickness	
POINT LOAD: D : 0 , #1-#3,#8-#10	17.5 TONNES **	Weld	
POINT LOAD: ANYWHERE ON WEB	17.5 TONNES **	Weld	
POINT LOAD: ANYWHERE ON BULKHEAD	17.5 TONNES **	Weld	
POINT LOAD: BULKHEAD/ WEB	46.7 TONNES **	Weld	
POINT LOAD: BULKHEAD/ BULKHEAD	46.7 TONNES **	Weld	

\*\* = ASSUMED PRINT: 300x300mm.

EVERY OTHER LOADCASE TO BE CONSIDERED SPECIALLY.



**MAIN DECK**

**MAIN DIMENSIONS:**  
 LENGTH OVER ALL 24,00 m  
 BREADTH MOULDED 6,86 m  
 DEPTH MOULDED 2,80 m  
 GROSS 122 GT  
 NET 122 NT

**“OLE”**

CALL SIGN: SLBU

CAPACITIES OF TANKS

TANK No.	VOLUME m <sup>3</sup>	LCG fr. L/2 m	VCG fr. BL m	TCG fr. CL m	MOM. OF INERT. m <sup>4</sup>
1 PS VOID	43.3	8.47	1.67	-1.72	20.5
1 SB VOID	43.3	8.47	1.67	+1.72	20.5
2 PS W.B.	67.0	2.36	1.40	-1.72	23.8
2 SB W.B.	67.0	2.36	1.40	+1.72	23.8
3 PS W.B.	44.6	-3.54	1.40	-1.72	15.9
3 SB W.B.	44.6	-3.54	1.40	+1.72	15.9
4 PS VOID	43.3	-8.47	1.67	-1.72	20.5
4 SB VOID	43.3	-8.47	1.67	+1.72	20.5



**PRÅMKOMPANIET AB**  
 Bogsering - Prämuthyrning - Isbrytning

Skal Hedarna 166 Tel. +46 (0)523 66 07 45  
 SE-453 92 Lysekil Fax. +46 (0)523 66 07 22  
 Sweden

YARD:	DATE:	DATE:	SCALE:
	2005-07-11	2006-03-22	
DRAWN:	TK/MHO	CHECKED:	
		PH	
<b>CAPACITY PLAN</b>			
DWGNO.	SHEET:		NO. OF SHEETS:
05138-152-01	1		1
ISSUE:		1	