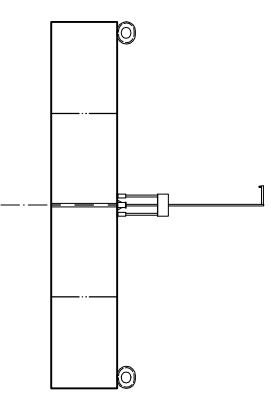


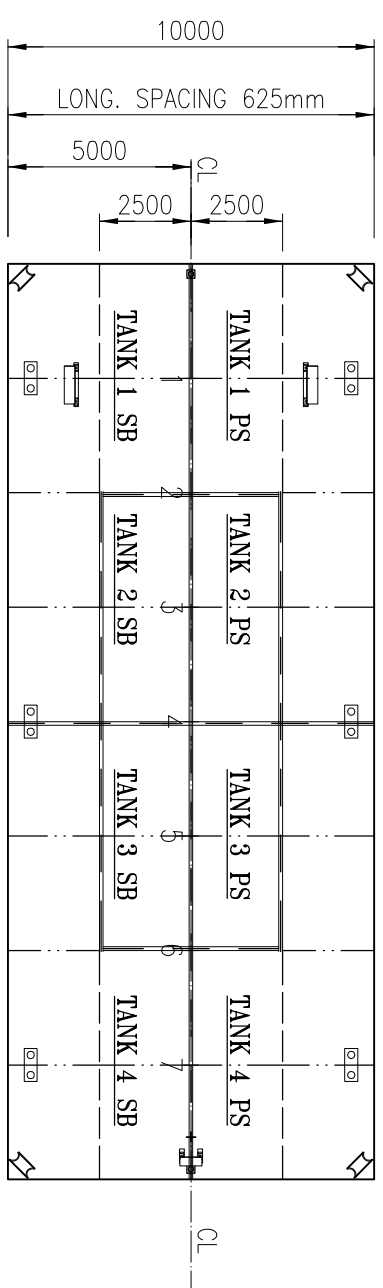
SIDE VIEW



SECTION

25000

WEB SPACING 3125mm



MAIN DECK

PERMISSIBLE LOADS		
LOAD CASE	MAX. PERM. LOAD	DIM. PART
ANYWHERE ON DECK	8,0 TONNES /m ²	Bending, long
EVEN DISTRIBUTION:	TRV. WEB	9 TONNES /m.
	BHD.	50 TONNES /m.
POINT LOAD:	ANYWHERE ON DECK	3,5 TONNES **
	ANYWHERE ON WEB	14 TONNES **
	ANYWHERE ON BULKHEAD	24 TONNES **
POINT LOAD:	BULKHEAD / WEB	48 TONNES **
	BULKHEAD / BULKHEAD	48 TONNES **

** = ASSUMED PRINT: 300x300mm.

EVERY OTHER LOADCASE TO BE CONSIDERED SPECIALLY.

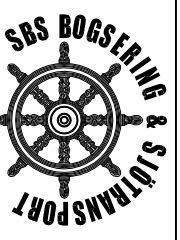
MAIN DIMENSIONS:

LENGTH OVER ALL 25,00 m
 BREADTH MOULDED 10,00 m
 DEPTH MOULDED 1,80 m
 GROSS 105 GT
 NET 31 NT
 CARGO CAPACITY 279 tonnes

”MELINA” CALL SIGN: SGVC

D	DECK EQUIPMENT ADDED.	030704	PHE
C	PERMISSIBLE LOADS MODIFIED DUE TO ADDED PILLARS.	020829	PHE
ISSUE:	DESCRIPTION:	DATE:	SIGN:
YARD:	DATE: 020207	CHECKED:	SCALE: 1:200
	DRAWN: PHE		

CAPACITY PLAN



Sandinge Bogsering & Sjötransport

Skal Hedarna 166
 SE-453 92 Lysekil
 Sweden
 Tel. +46 (0)523 66 07 45
 Fax: +46 (0)523 66 07 22
 E-mail: info@sandinge.com
 Web: www.sandinge.com

CAPACITIES OF WATER BALLAST TANKS					
TANK No.	VOLUME m ³	LCG fr. L/2	VCG fr. BL	TCG fr. CL	TRV MOM. OF INERTIA
4 PS & 4 SB	77 m ³ EACH	6,91	0,94	± 2,95	89,5
3 PS & 3 SB	28 m ³ EACH	3,125	0,90	± 1,25	8,1
2 PS & 2 SB	28 m ³ EACH	- 3,125	0,90	± 1,25	8,1
1 PS & 1 SB	77 m ³ EACH	- 6,91	0,94	± 2,95	89,5

DWG NO. 02228-152-2

ISSUE: **D**