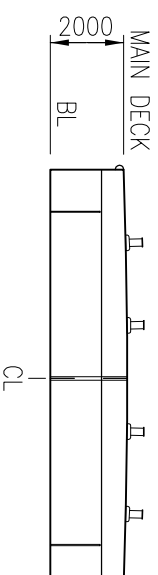
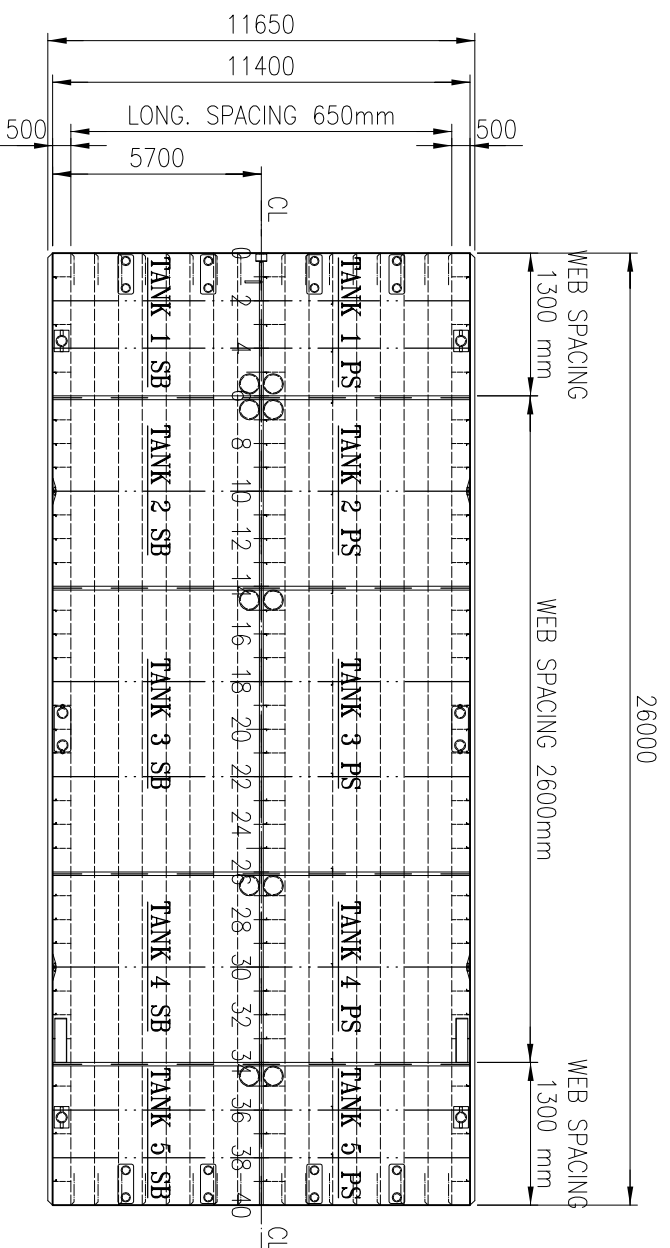


SIDE VIEW



SECTION



MAIN DECK

PERMISSIBLE LOADS		
LOAD CASE	MAX. PERM. LOAD	DIM. PART
ANYWHERE ON DECK #6-#34	4,1 TONNES /m2	Bending, long
ANYWHERE ON DECK #0-#6, #34-#40	9,7 TONNES /m2	Plate thickness
EVEN DISTRIBUTION: FLOOR	47 TONNES /m.	Buckling
EVEN DISTRIBUTION: BHD.	47 TONNES /m.	Buckling
POINT LOAD: ANYWHERE ON DECK	3,5 TONNES **	Plate thickness
POINT LOAD: ANYWHERE ON FLOOR	24 TONNES **	Weld
POINT LOAD: ANYWHERE ON BULKHEAD	24 TONNES **	Weld
POINT LOAD: BULKHEAD/ FLOOR	48 TONNES **	Weld
POINT LOAD: BULKHEAD/ BULKHEAD	48 TONNES **	Weld

** = ASSUMED PRINT: 300x300mm.

EVERY OTHER LOADCASE TO BE CONSIDERED SPECIALLY.

MAIN DIMENSIONS:

LENGTH OVER ALL 26,00 m
 BREADTH MOULDED 11,40 m
 DEPTH MOULDED 2,00 m
 GROSS 148 GT
 NET 44 NT

CARGO CAPACITY

326 tonnes internal, freeboard
 345 tonnes national freeboard III
 421 tonnes national freeboard II

“MAKKER”

CALL SIGN: SINM

CAPACITIES OF WATER BALLAST TANKS					
TANK No.	VOLUME m ³	LCG fr. L/2	VCG fr. BL	TCG fr. CL	TRV MOM. OF INERTIA
5 PS & 5 SB	38 m ³ EACH	10,8 m.	1,14 m.	2,8 m.	60,2 m ⁴
4 PS & 4 SB	61 m ³ EACH	6,5 m.	1,04 m.	2,82 m.	80,3 m ⁴
3 PS & 3 SB	91 m ³ EACH	0,0 m.	1,04 m.	2,82 m.	120,4 m ⁴
2 PS & 2 SB	61 m ³ EACH	-6,5 m.	1,04 m.	2,82 m.	80,3 m ⁴
1 PS & 1 SB	38 m ³ EACH	-10,8 m.	1,14 m.	2,81 m.	60,2 m ⁴

ISSUE: C	DESCRIPTION: DECK EQUIPMENT ADDED.	DATE: 030704	SIGN: PHE
YARD: SANDINGE BOGSERING & SJÖTRANSPORT LYSEKIL	DATE: 020510	CHECKED:	SCALE: 1:200
DRAWN: PHE			
TITLE: CAPACITY PLAN			
DWG NO. 02117-152	ISSUE: C		



Sandinge Bogsering & Sjötransport
 LYSEKIL

Skaal Hedarna 166
 SE-453 92 Lysekil
 Sweden
 Tel: +46 (0)523 66 07 45
 Fax: +46 (0)523 66 07 22
 E-mail: info@sandinge.com
 Web: www.sandinge.com