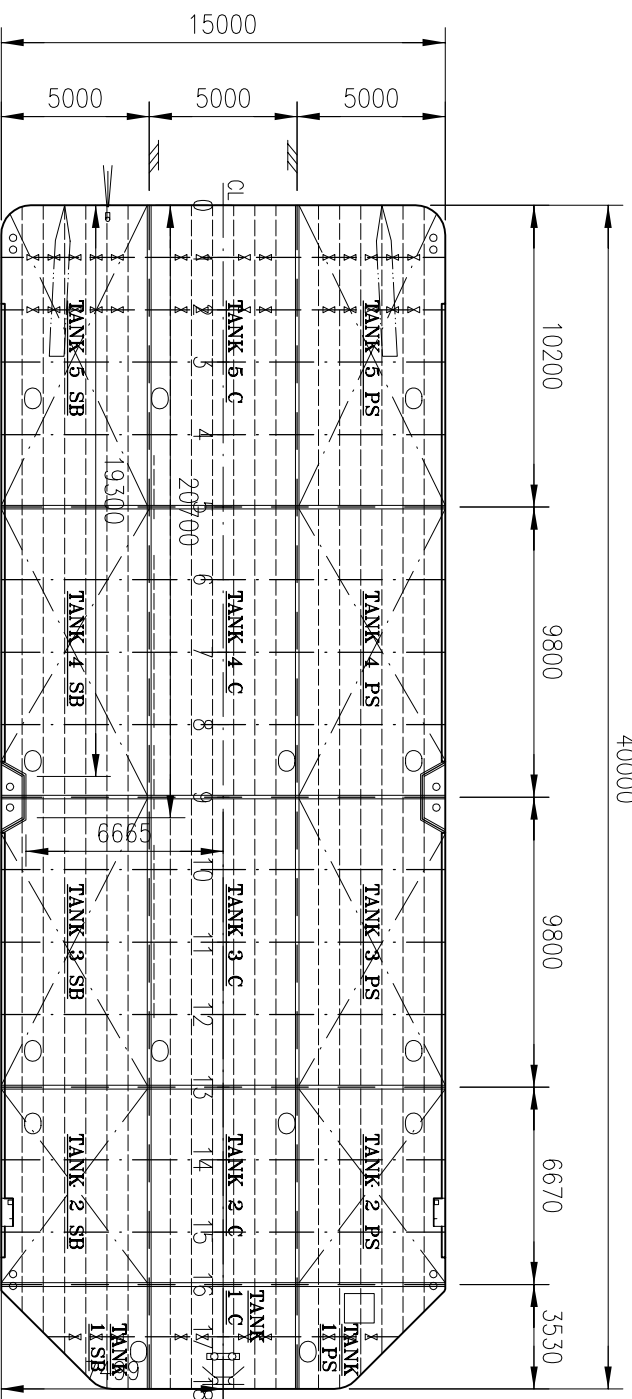
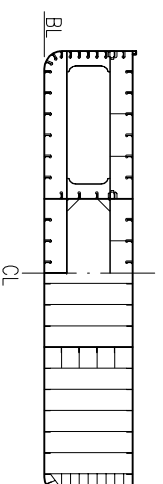


**SIDE VIEW**



**MAIN DECK**



**SECTION**

#3,4,6,7,8,10,  
11,12,14,15

#5,9,13

PERMISSIBLE LOADS		
LOAD CASE	MAX. PERM. LOAD	DIM. PART
ANYWHERE ON DECK	5.2 TONNES /m <sup>2</sup>	Longitudinal
EVEN DISTRIBUTION:	TRV. WEB	12.9 TONNES /m. Web
EVEN DISTRIBUTION:	TRV. BULKHEAD	23.9 TONNES /m. Buckling
EVEN DISTRIBUTION:	LONG. BULKHEAD	7.0 TONNES /m. Buckling
POINT LOAD:	ON DECK	3.2 TONNES ** Plate thickness
POINT LOAD:	ANYWHERE ON WEB	35.0 TONNES ** Weld *
POINT LOAD:	ANYWHERE ON BULKHEAD	17.1 TONNES ** Buckling
POINT LOAD:	BULKHEAD / WEB	70.0 TONNES ** Weld *
POINT LOAD:	BULKHEAD / BULKHEAD	81.6 TONNES ** Weld *

\* = WELD:

Between deck & bulkhead: a=7-8 mm  
Between deck & longitudinal: a=6 mm  
Between deck & web: a=6 mm

\*\* = ASSUMED PRINT: 300x300mm.

EVERY OTHER LOADCASE TO BE CONSIDERED SPECIALLY.

MAIN DIMENSIONS:

LENGTH OVER ALL 40,0 m  
BREADTH MOULDED 15,0 m  
DEPTH MOULDED 3,0 m

**"FARAO"**

CALL SIGN: SMOP

CAPACITIES OF WATER BALLAST TANKS

TANK No.	VOLUME m <sup>3</sup>	LCG fr. L/2 m	VCG fr. BL m	TCG fr. CL m	MOM. OF INERT. m <sup>4</sup>
1 SB/PS VOID	15.6 m <sup>3</sup>	17.62	2.20	+/-4.29	-
1 C VOID	23.5 m <sup>3</sup>	17.86	2.21	0.0	-
2 SB/PS WB	94.2 m <sup>3</sup>	13.04	1.53	+/-4.97	69.5
2 C VOID	95.4 m <sup>3</sup>	13.06	1.52	0.0	-
3 SB/PS WB	142.5 m <sup>3</sup>	4.90	1.50	+/-4.98	102.1
3 C VOID	143.8 m <sup>3</sup>	4.90	1.49	0.0	-
4 SB/PS WB	142.5 m <sup>3</sup>	-4.91	1.50	+/-4.99	102.1
4 C VOID	143.8 m <sup>3</sup>	-4.90	1.49	0.0	-
5 SB/PS WB	117.8 m <sup>3</sup>	-13.99	1.67	+/-4.99	106.3
5 C VOID	118.3 m <sup>3</sup>	-14.00	1.67	0.0	-

YARD:	DATE:	DATE:	SCALE:
	2006-07-06	2006-01-13	1:250
TITLE:	DRAWN:	CHECKED:	
	TK, FR	PH	
<b>CAPACITY PLAN</b>			
DWG NO.	SHEET:		NO. OF SHEETS:
06221-152-01	1		1

**Sandinge Bogsering & Sjötransport**  
LYSEKIL



Skaal Hedarna 166  
SE-453 92 Lysekil  
Sweden  
Tel: +46 (0)523 66 07 45  
Fax: +46 (0)523 66 07 22  
E-mail: info@sandinge.com  
Web: www.sandinge.com